



# V-Sconce

## LED Luminaire

QUALITY • PERFORMANCE • STYLE



**VISIONAIRE LIGHTING**  
*Performance In A Whole New Light*





**Modern innovation meets  
unparalleled performance.**



# V Sconce - LED Luminaire



The new V Sconce LED Series offers clean, functional styling that is defined by its sleek low profile design and rugged construction. It combines the latest LED performance and advanced LED thermal management technology, and provides lighting that is both energy efficient and aesthetically pleasing. Choose from 16 to 48 LEDs that looks perfect with any of the LED configurations; thereby enabling the lighting designer to tailor the lighting to the application needs; while maintaining a uniform appearance throughout the entire project. Choose from a 1,600 to 9,500+ lumen package with life expectancy of well over 20 years or 100,000 hours of operation.

For general wall mount and pedestrian areas the V Sconce LED series brings contemporary LED lighting design into the 21st century.

## Fixture Construction

- Cast aluminum housing with integrated heat sink for maximum thermal management of the LEDs for extreme long life of the LEDs.
- A wall mounting design that simplifies the installation of the fixture.
- Engineered optical assemblies with three distribution patterns.

## LED Technology

- 16 to 48 LEDs
- 350, 530, 700 or 1000 mA ratings.
- 1,600 to 9,500 lumens package available.
- 4000 or 5000 Kelvin for natural or white light.
- Full cutoff optics available in three distribution patterns.
- 69,000 to 126,000 hours or more of life for the LEDs

## Applications

- The V Sconce LED Series is destined to become the standard for which LED lights are measured. Simple flowing lines that house scalable LEDs that replace traditional HID fixtures; for a wide range of lighting applications. From shopping centers to auto dealerships, college campuses; the V Sconce LED series is the transition of LED lighting into tomorrow.





**Cast Aluminum  
Integral Heat Sink**

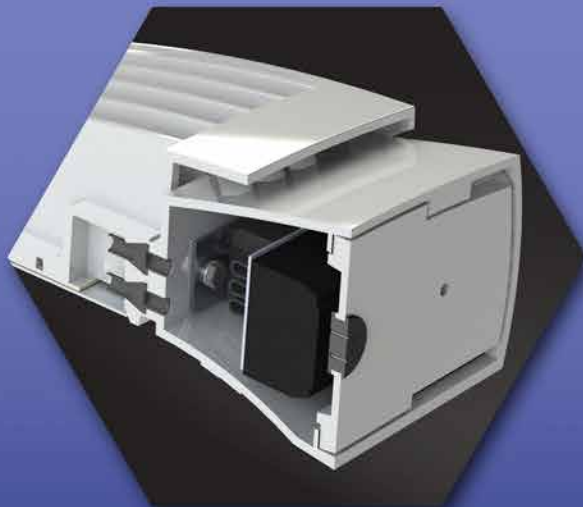
Built to draw heat away from the LED  
junction points for extended LED life.

**LED Light Engines**

The LED light assemblies are  
available with 16, 32 or 48 LEDs.

**Surge Protector**

10 kV Surge protector supplied as standard.



Internal Components Detail





### Full Cutoff Optics

Available in three different distribution patterns.

### Cast Aluminum Driver Compartment

Separated from the LED array/heat sink structure; and provides easy driver access.

### One Piece Gasket

For complete weather protection.

### LED Driver

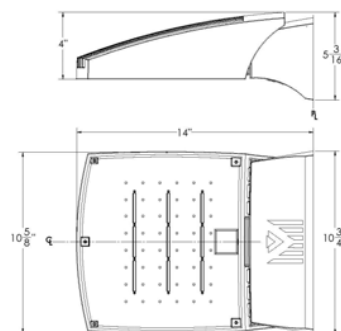
High performance with a power factor greater than 90%, and rated for -40° C operation.



# V Sconce LED



## Dimensional Drawings



Fixture	A	B	C	Max. LEDs	Lbs
VSC-1	14"	5"	10.5"	48	20

The new V Sconce LED wall mount Series continues the unique contemporary design that is inspired by the VLX area light series. It combines LED performance and advanced LED thermal management technology and provides lighting that is energy efficient and aesthetically pleasing.

The LED's performance and the driver's life are maximized by enclosing them in two separate cast aluminum housings.

Easy access for mounting and maintenance.

The LED light assemblies come with 16, 32, or 48 LEDs. Three optical distribution patterns are available. Choose between 4000 or 5000 Kelvin temperature for the LEDs.

A durable polyester powder coat finish is guaranteed for five years; and is available in standard or custom colors.

The V Sconce Series is an exceptional choice for office complexes, schools, commercial buildings, and many architectural projects.

Model	Optics	Source	Milliamps	Kelvin	Voltage	Mounting	Finish	Options
<b>VSC-1</b>	Type II (T2)	# of LEDs 16 (16LC) <small>*Not available in 700mA</small>	mA 350 (3)	4000K <small>*Neutral white</small> (4K)	120-277 <small>*Universal voltage</small> (UNV)	WallMount (WM)  Conduit Box (VCB)	Bronze (BZ)  Black (BK)  White (WH)  Graphite (GP)  Silver Metallic (SL)  Custom Color (CC)	Button Type Photocell <small>*Specify voltage.</small> (PC120) (PC208) (PC240) (PC277) <small>*Not available with (EBPL)</small>  Emergency Battery Pack (EBPL)  Motion Sensor (MS)  0-10 Volt Dimming Driver (DIM)  Up-Light Orientation (UP) <small>*Not available with motion sensor (MS)</small>
	Type III (T3)	32 (32LC)	530 (5)	5000K <small>*Cool white</small> (5K)				
	Type IV (T4)	48 (48LC)	700 (7)					
			1000* (10)  <small>*1000mA not available for 48LC</small>					

For more detailed information on mounting, wiring or installation instructions, please consult factory. If poles are not ordered with fixtures, please specify mounting requirements. This document contains proprietary information of Visionaire Lighting, LLC. Any use of this information requires the written approval of Visionaire Lighting, LLC. In keeping with our TQM policy of continuous improvement, Visionaire reserves the right to change any specifications contained herein without prior notice.



#### Housing

- Cast aluminum LED housing with integral cooling fins for thermal management.

#### Mounting/Driver Compartment

- Durable two-piece cast aluminum driver compartment utilizes a quick mount/set screw mounting for ease of maintenance and sealed with a one-piece gasket.

#### Thermal Management

- The V-Sconce series provides excellent thermal management by mounting the LEDs to the substantial heat sink of the housing. This enables the Luminaire to withstand higher ambient temperatures and driver currents without degrading LED life.
- The L70 test determines the point in an LEDs life when it reaches 70 percent of its initial output. The V Sconce series LEDs have been determined to last 100,000+ hours in 25° C environments when driven at 350 mA.

#### Optical System

- The highest lumen output, Evo/C LEDs are utilized in the V Sconce series. IES distribution Types II, III and IV are available. The optical system qualifies as IES full cutoff to restrict light trespass, glare and light pollution.
- CRI values are 70.

#### Quali-Guard® Finish

- The finish is a Quali-Guard® textured, chemically pretreated through a multiple-stage washer, electrostatically applied, thermoset polyester powder coat finish, with a minimum of 3-5 millimeter thickness. Finish is oven-baked at 400° F to promote maximum adherence and finish hardness. All finishes are available in standard and custom colors.
- Finish is guaranteed for five (5) years.

#### Electrical Assembly

- The V-Sconce LED series is supplied with a choice of 350, 530, 700 or 1000 mA high-performance LED drivers that accept 120v thru 480v, 50 Hz to 60 Hz, input. Power factor of 90%. Rated for -40°C operations.
- 10 kV surge protector supplied as standard.

#### Warranty

- Five (5) year Limited Warranty on entire system, including finish. For full warranty information, please visit [visionairelighting.com](http://visionairelighting.com).

#### Options

- Button Type Photocell
- Emergency Battery Pack
- Motion Sensor
- 0-10 Volt Dimming Driver
- Up-Light Orientation

#### Listings

- The V-Sconce is UL listed, suitable for wet locations.
- IP65 Rated
- Powder Coated Tough
- DLC Listed



DesignLights Consortium (DLC) qualified Product. Some configurations of this product family may not be DesignLights Consortium (DLC) listed, please refer to the DLC qualified products list to confirm listed configurations. <http://www.designlights.org/>

#### V Sconce 5K Lumen Data

# LEDs	mA	Type 2	Type 3	Type 4	Watts
16	350	1828	1632	1781	19
	530	2574	2298	2508	28
	1000	4083	3645	3979	59
32	350	3656	3264	3563	38
	530	5147	4596	5016	56
	700	6531	5831	6365	75
	1000	8166	7290	7958	117
48	350	5484	4896	5344	58
	530	7721	6893	7524	83
	700	9796	8746	9547	113

Visit [www.VisionaireLighting.com](http://www.VisionaireLighting.com) for up-to-the-minute chart information, including types not listed here.

\* For 4000K multiply values by 0.90





Engineered to last a lifetime.



19645 Rancho Way . Rancho Dominguez, CA 90220  
310.512.6480  
[www.VisionaireLighting.com](http://www.VisionaireLighting.com)