

California Aria Size2 LED

Project Name:

Catalog Number:

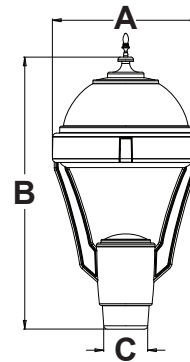
Type



CAL-2-L



Dimensional Drawings



CAL-2-L

Fixture	A	B	C	Max. LEDs	Lbs
CAL-2-L	20"	37 ¹ / ₈ "	6"	84	42

Beauty meets performance in this feature-rich and highly versatile **California Aria** luminaire series. The **California Aria LED** offers excellent control and an exceptionally long life (minimum 100,000 hours). Our high-efficiency light engines house our latest high-brightness, **EVO/C LED**r for a minimum CRI of 70, and increased energy savings. Available in 4,000 or 5,500 Kelvin.

The **California Aria's** fully-sealed housing features an exceptionally well-designed thermal management system that provides superior heat dissipation for the LEDs.

The **California Aria** is a strong, die cast aluminum fixture, manufactured in five architecturally pleasing housing styles, with mix and match finials and a variety of finishes to choose from. Tool-less entry makes this luminaire's maintenance a breeze.

This post top luminaire is a IES full cutoff fixture; and is Dark-Sky certified to restrict light trespass, glare and light pollution for neighborhood-friendly outdoor lighting that is especially desirable in any pedestrian locale.

The **California Aria** is a perfect compliment to any shopping center, park, walkway or boardwalk environment.

Model	Optics	# of LEDs	Milliamps	Source	Kelvin	Voltage	Mounting	Finish	Options
CAL-2-L	Type I (T1) 	42 (42LC)	mA 350 (3)	LED (LED)	4000K *Neutral white (4K)	120-277 *Universal voltage (UNV)	Post Top *Slips over 3"ØD tenon x 4 1/2" tall with special threaded mounting plate. Requires special tenon adaptor if poles are not Visionaire Lighting poles. (PT)	Bronze (BZ)	<u>Finials</u> No. 1 (FIN1) No. 2 (FIN2) No. 3 (FIN3) No. 4 (FIN4) <u>Button Type Photocell</u> *Specify voltage (PC120) (PC208) (PC240) (PC277) Dual Circuit (DC) <u>Fusing</u> *Specify voltage Single in-line fuse (SF120) (SF277) Double in-line fuse (DF208) (DF240) Cutoff Louver System (CLS) Dimming/Controls *Consult factory 0-10 V Dimming Driver *No controls (DIM) 10KV Surge Protector (10KV)
	Type II (T2) 	84 (84LC)	530 (5)		5500K *Cool white (55K)	480 (5)		White (WH)	
	Type III (T3) 					347 (8)		Forest Green (FG)	
	Type IV (T4) 							Silver Metallic (SL)	
	Type V (T5) 							Weathered Brown (WB)	
	Type V-W (T5W) 							Soft Gold (SG)	
								Custom Color (CC)	

For more detailed information on mounting, wiring or installation instructions, please consult factory. If poles are not ordered with fixtures, please specify mounting requirements. This document contains proprietary information of Visionaire Lighting, LLC. Any use of this information requires the written approval of Visionaire Lighting, LLC. In keeping with our TQM policy of continuous improvement, Visionaire reserves the right to change any specifications contained herein without prior notice.

California Aria Size2 LED

Housing

- Die cast aluminum fixture housing is 20" diameter with integral tool-less push latch sealing mechanism. Housing features a choice of five heavy-duty, spun aluminum tops.

Thermal Management

- The **California Aria** provides excellent overall thermal management by maximizing the efficiency of the heat sink in the fixture. This enables the **California Aria** to withstand higher ambient temperatures and higher drive currents without degrading LED life.

Door Frame

- Die cast aluminum door frame incorporates one-piece silicone channel gasket to seal the housing completely. The tool-less push latch allows the housing to hinge upwards for access to the LEDs; and is supported with a hinge and latch mechanism.
- Silicone gasket for complete weather and insect protection.

Optical System

- The highest lumen output **Evo/C LEDr** are utilized. Estimated life of the LEDs is 100,000+ hours. IES distributions Types I, II, III, IV and V are standard. Available with up to 84 LEDs. The optical system qualifies as IES full cutoff; and is Dark-Sky certified to restrict light trespass, glare and light pollution for neighborhood-friendly lighting.
- CRI values are 70 for 4000K and 75 for 5500K.

Quali-Guard® Finish

- Fixture components are chemically pretreated through a multiple stage washer and finished with an electrostatically applied, thermoset polyester powder coat textured paint with a 3 to 5 mils thickness. Finish is oven baked at 400 °F for maximum adherence and finish hardness.
- Available in standard and custom colors.
- Finish is guaranteed for five (5) years.

Post Top Mount

- The **California Aria's** contractor-friendly mounting hardware is concealed inside the post-top fitter; which slips over 3" O.D. x 4" tall tenon with a special threaded mounting plate and is secured by a high-strength bolt. No exposed hardware.

Electrical Assembly

- The **California Aria LED series** is supplied with a high-performance LED driver, that accepts 120 V through 277 V, 50 Hz to 60 Hz input. Power factor is 90%. Rated for -40 °F operation.
- 3 kV surge protector supplied as standard.

Warranty

- Five (5) year Limited Warranty on entire system, including finish. For full warranty information, please visit VisionaireLighting.com.

Solar Panel Option

- The **California Aria LED** is compatible for use with Visionaire Lighting's Solar Panel Pole™.

Options

- Fusing
- Finials
- Button type photocell
- Dual circuit
- 10KV Surge Protector
- Cutoff louver system
- 0-10 V dimming driver

Please consult factory for detailed custom options.

Listings

- **California Aria** is ETL listed, suitable for wet locations.
- Dark-Sky Friendly® certified by the International Dark-Sky Association.
- LM79 and LM80.
- Powder Coated Tough™ 
- RoHS compliant.

EPA Data

Fixture Only	●
CAL-2-L	2.3

Housing Shades



CAL-1-L
NO FINIAL



CAL-2-L
FIN2



CAL-3-L
FIN1

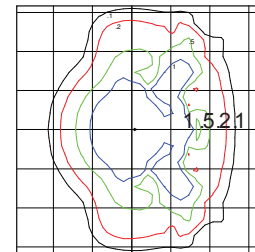


CAL-4-L
FIN1



CAL-5-L
NO FINIAL

Isolux Curve



CAL ARIA-1 ISOLUX CURVE
TYPE III OPTICS
84 LEDs @ 530 mA

Scale: 1 Square = 20 ft
Initial Light Loss Factor = 1.00
Total Lumens Per Luminaire = 0
Mounting Height = 16 ft
Arrangement: Single

LED Data Chart for 5500K*

# Bars	# LEDs	Output mA	Type 1	Type 2	Type 3	Type 4	Type 5	Type 5-W	System Watts	L70 Hours
1	42	350	3,840	3,941	3,754	3,811	3,988	4,140	46	150,000
		530	4,647	5,132	4,925	4,855	5,410	5,644	68	100,000
2	84	350	7,507	7,883	6,663	7,320	7,976	8,280	92	150,000
		530	9,155	10,265	9,988	9,710	10,820	11,288	136	100,000

Visit www.VisionaireLighting.com for up-to-the-minute chart information, including types not listed here.

* For 4000K multiply values by 0.90

19645 Rancho Way Rancho Dominguez, CA 90220
Tel: (310) 512-6480 Fax: (310) 512-6486
www.visionairelighting.com